

Ovens

20 Roney Macs Twist, Dinner Plain, Victoria, 3898



FEATURES:



6 Occupancy



3 Bedroom



3 Bathroom



2 Car Parking

ABOUT THIS PROPERTY

Sitting on the edge of the Village with a walking trail from your door to the Dinner Plain circuit track, Ovens is an ideal year-round holiday rental. Ovens has 3 large bedrooms all with ensuites and its second story modern kitchen, open plan dining & lounge area has great views to the National Park. The property is located just 50 metres from the Dinner Plain 4WD track and the Brabralung trail - a walking track in Summer and main cross country trail in Winter. We would recommend the house to everyone but think it is especially suited to families with older children needing separate rooms or several couples.

KITCHEN & COOKING FACILITIES

Full Kitchen

Full Size Fridge

Dishwasher

Microwave

Full Size Oven

4 Burner Cooker

BEDROOMS & BEDDING CONFIGURATION

This property sleeps 6 people.

There are 3 Bedrooms with the following configuration.

Bedroom 1: 1 x King Size Bed

Bedroom 2: 1 x Double Size Bed

Bedroom 3: 2 x Single Beds

Linen, Towels and Bedding is provided for all beds.

BATHROOMS

3 Bathrooms - All Ensuites

HEATING & COOLING FACILITIES

No Cooling Facilities

Heating - Hydronic

Heating - Gas Log Fire

LAUNDRY DETAILS

Washing Machine

Tumble Dryer

Drying Room for Ski Gear

ENTERTAINMENT FACILITIES

Smart TV - Over 50 Inch

Collection of Books

PARKING

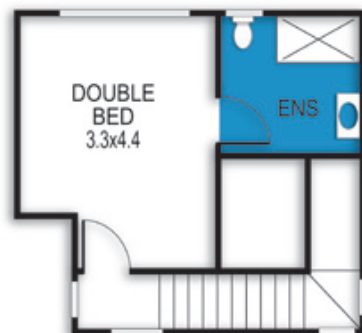
Driveway Parking

PETS

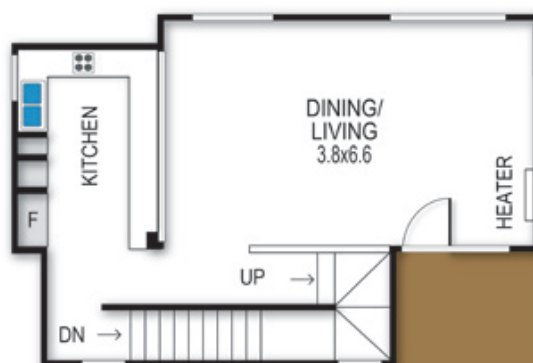
Strictly No Pets at this property

Ovens

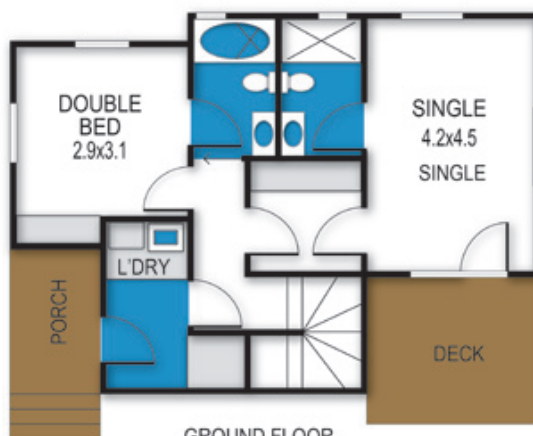
20 Roney Macs Twist, Dinner Plain



SECOND FLOOR



FIRST FLOOR



GROUND FLOOR

archistyle

Whilst every attempt has been made to ensure the accuracy of this floorplan, measurements of doors, windows, rooms and any other items are approximate only. The producer or the agent cannot be held responsible for any errors, omissions or misstatements. This plan is for illustrative purposes only and should be used as such.